
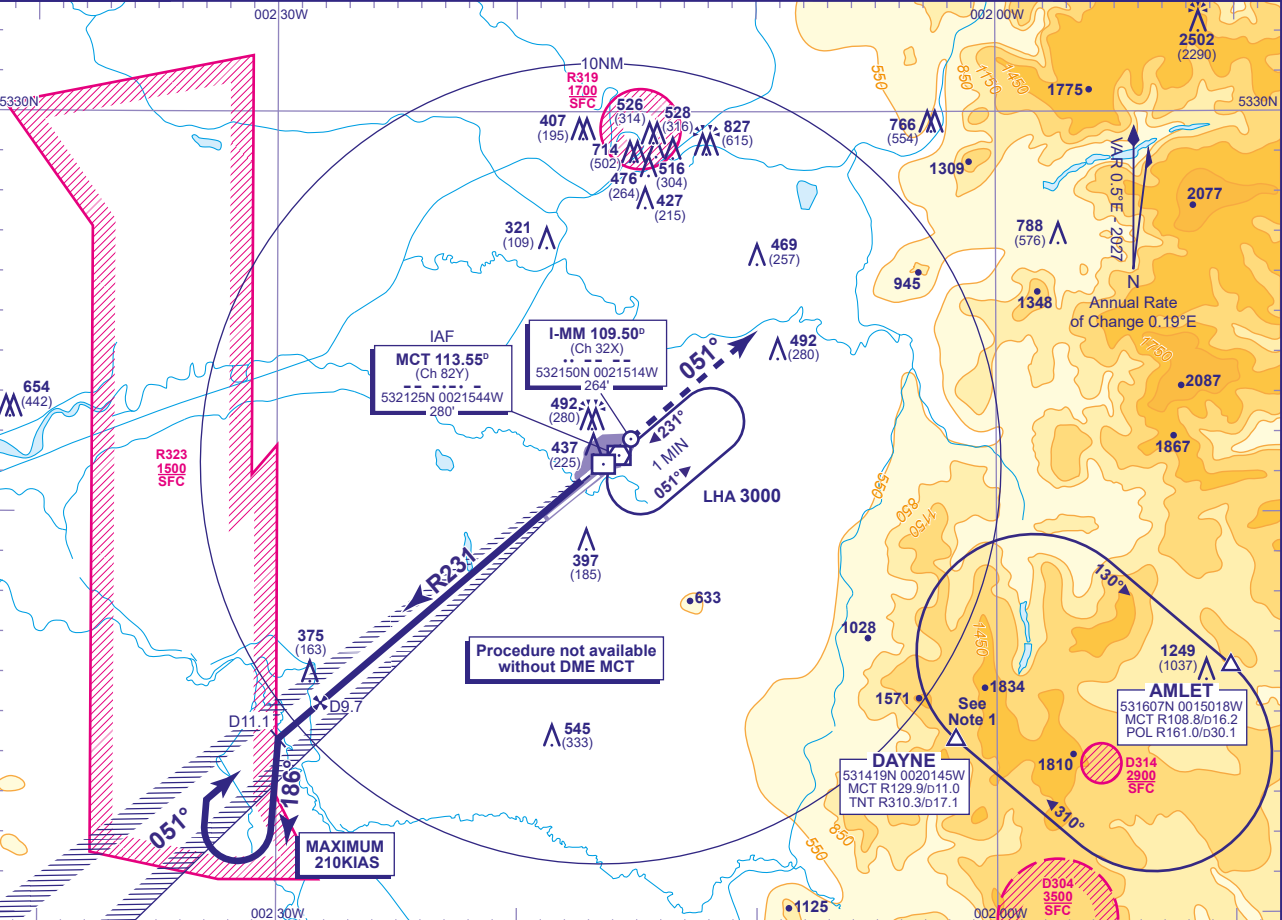


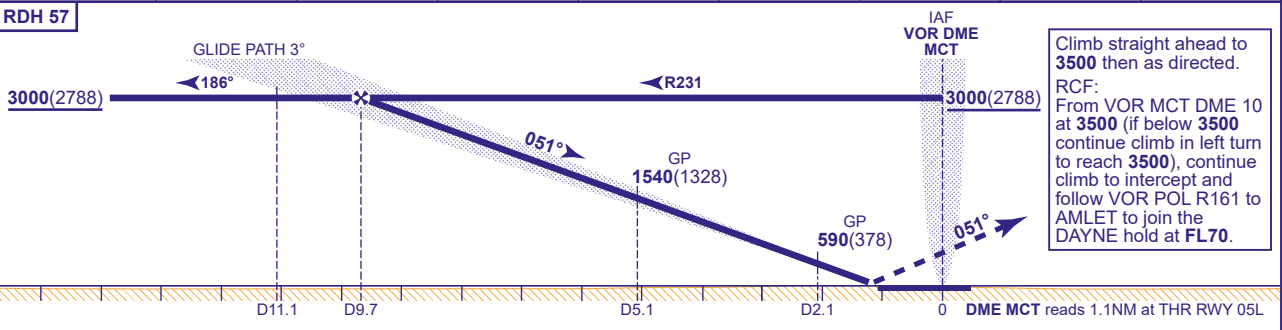
INSTRUMENT APPROACH STAFF - ICAO

MANCHESTER  
ILS/DME (MCT)  
RWY 05L  
(ACFT CAT A,B,C,D)

 MSA 25NM VOR MCT	APP	118.580, 135.005	MANCHESTER RADAR	AD ELEVATION	257	ILS/DME (MCT) RWY 05L (ACFT CAT A,B,C,D)
		121.355	MANCHESTER DIRECTOR	THR ELEVATION	212	
	TWR	118.630, 119.405	MANCHESTER TOWER	OBSTACLE ELEVATION 2502 AMSL (2290) (ABOVE THR)		
		121.855, 121.705	MANCHESTER GROUND			
	ARRIVAL ATIS	128.180	MANCHESTER INFORMATION	BEARINGS ARE MAGNETIC		
					TRANSITION ALTITUDE	5000



RECOMMENDED PROFILE GLIDE PATH 3°, 318FT/NM								
DME MCT	9.1	8.1	7.1	6.1	5.1	4.1	3.1	2.1
ALT(HGT)	2810(2598)	2490(2278)	2170(1958)	1860(1648)	1540(1328)	1220(1008)	900(688)	590(378)



Aircraft Category		A	B	C	D	Rate of descent	G/S KT	160	140	120	100	80
OCA (OCH)	CAT I	369(157)	380(168)	392(180)	405(193)		FT/MIN	850	740	640	530	420
	CAT II	277(65)	289(77)									
VM(C)OCA (OCH ALL)		Total Area	790(533)	820(563)	1110(853)	1110(853)						

**NOTE 1** DAYNE HOLD:- Limiting outbound distance MCT DME 16/TNT DME 14. Minimum holding level is FL70.  
**2** Procedure turns restricted to maximum 210KIAS.

**CHANGE (12/25):** MCT VOR RECALIBRATED. MAG VAR. HEADINGS. WAYPOINT RADIALS.